



# SP11 SERIES

25 - 40 HP / INDUSTRIAL ELECTRIC COMPRESSOR

## DEPENDABLE BY DESIGN

Shown with Optional Enclosure



**SULLIVAN  
PALATEK**





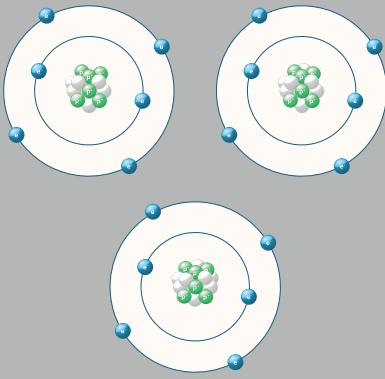
***Sullivan-Palatek is committed to continuous improvement, in the compressed air industry, meeting the needs of customers, employees, suppliers, and shareholders in a world of rapid change.***

Sullivan-Palatek, headquartered in Michigan City, has positioned itself as a leader in the realm of high-end industrial air compressors, setting a benchmark for reliability and a steadfast commitment to supporting American jobs through localized assembly. The core tenets of their value proposition encompass a comprehensive range of attributes, making them an industry standout.

At the heart of Sullivan-Palatek's offerings is an unwavering commitment to quality, ensuring that each air compressor is built to the highest standards. Their emphasis on efficiency underscores a dedication to optimizing performance, thereby delivering products that not only meet but exceed industry expectations. Moreover, customer support stands as a cornerstone, with a responsive and knowledgeable team ready to address any inquiries or issues, contributing to an overall seamless experience for clients.

## Isentropic Efficiency:

Gauges how well a compressor transforms input power into compressed air, minimizing losses. In an ideal scenario, with no practical attainability, compression would occur without any inefficiencies like friction or heat dissipation. However, real-world processes involve unavoidable losses, diminishing efficiency. CAGI, backed by major compressor manufacturers, provides Compressor Data Sheets for performance comparison, now featuring Isentropic Efficiency as a helpful metric.

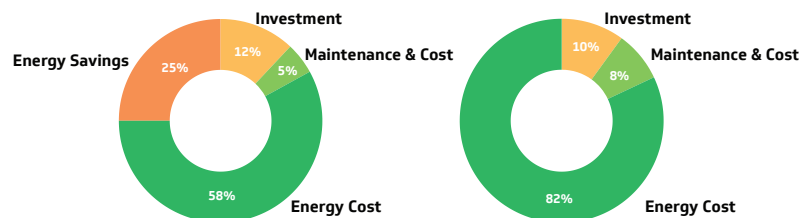


- Made in the USA
- Reduced energy consumption and more capacity
- Durable
- Precision machined and highly efficient rotor profile with tapered roller bearings
- Tight tolerances provide maximum efficiency.

108 mm Airend



## Variable Speed vs. Fixed Speed



Using a variable frequency compressor can easily **save 25% energy** by using just the right amount of energy required to do the job and no more.

Sullivan-Palatek compressors with **Variable Frequency Drive (VFD)** dynamically adjust motor speed to match air demand, cutting power consumption. Key benefits include:

**Energy Efficiency:** VFD compressors save up to 25% compared to fixed-speed counterparts by aligning motor speed with required air output.

**Lower Operating Costs:** Diminished energy usage results in reduced operating expenses, especially in applications with varying air demand.

**Environmental Advantages:** Decreased greenhouse gas emissions contribute to sustainability goals, potentially reducing costs in high-energy regions.

**Future Growth Flexibility:** Output modulation based on demand enables adaptability for future expansion.

**Minimum Pressure Valve**

**Fluid Cooler**

**Blowdown Solenoid**

**Pressure Regulator**

**Air/Oil Separator Tank**

**Fluid Fill**

**Fluid Sight Glass**

**T1 MPC Controller**

- Running hours/hours loaded/unloaded
- Service timers and warnings, inhibits, alarms and shut-down protections
- Full system monitoring of all vital parameters

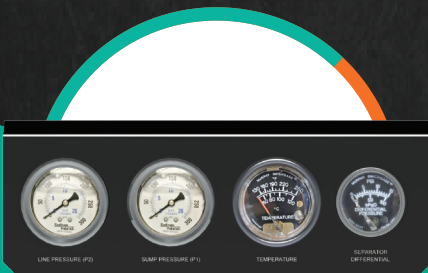
Optimized Air-Oil separators have less restriction and reduce fluid carryover to less than 3 ppm with an 8,000-hour maintenance frequency

- **High-Efficiency Separation Element:** advanced filtration technology
- **Low Pressure Drop:** maintain the energy efficiency of the compressor
- **Quality Construction Materials:** prevents corrosion and wear

Optional Tank Mount



Optional Electro Mechanical (EM) Package



- Line Pressure
- Sump Pressure
- Discharge Temperature
- Separator Differential

**T1 Controller:** designed for precision, reliability, and maximum efficiency. User friendly display facilitates navigation and quick access to critical system data. The controller tracks performance in real time with alerts and diagnostics to prevent downtime. Your partner in productivity, efficiency, and peace of mind.



## Air Aftercooler

## Water Separator

Condensate separator with timed auto-drain collects and automatically drains condensate



10 Micron Oil Filter with cellulose layered glass fiber substrate to provide more efficiency



Filled with PAL - EXTRA 44, a fully synthetic premium lubricant formulated to prevent varnish under higher temperatures and harsh conditions with an 8,000-hour extended drain interval

## NEMA Premium Efficient, TEFC motor

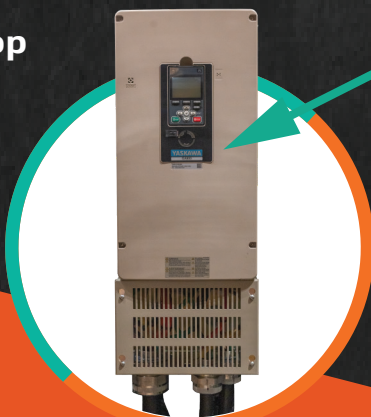
- Totally Enclosed Fan Cooled with a true IP55 rating against dust and moisture
- All NEMA Premium ratings have a 1.25 Service Factor resulting in cooler operation and extended life of the motor
- Class F insulation (impregnation resin and magnet wire are class H)
- All Cast Iron Construction, including Terminal Box and Fan Cover
- Solid feet for reduced vibration levels and impact absorption
- Optimized ventilation system for cooler operation and extended life
- Flange mounted for positive alignment

## Starter/Control Box

Wye-Delta Starter in NEMA 4

- Achieve lower starting current demand.
- 230/460V field changeable
- Optional 200/208V

## E-Stop



Optional Variable Frequency Drive | NEMA 1  
\*Optional Line Reactor



Sullivan-Palatek ensures the dependability of their air compressors through an industry-leading warranty, offering benefits such as confidence in product quality, peace of mind with extended coverage, and robust customer support. Warranty options include:

**Standard Warranty:** One-year package and two year airend warranty with recommended OEM parts and lubricants.

**Platinum Warranty:** One-year package warranty with a five-year major components warranty, covering motor, airend, drive coupling, coolers, sump tank, and VFD drive. Includes reasonable freight and labor for repairs. OEM parts and lubricants required.

**Platinum Plus Warranty:** Extends airend warranty to ten years, unlimited hours, with required OEM parts and lubricants.

These warranty programs underscore the company's commitment to providing reliable compressed air, crucial for various industries.

\*Refer to our full written warranty statement for additional details on coverage and user obligations.

Choosing Sullivan-Palatek PAL-Parts for air compressors is a wise investment, especially for critical equipment.

**Benefits include:**

**Quality Assurance:** PAL-Parts meet the same quality standards as original components.

**Exact Fit:** Designed for seamless integration, PAL-Parts facilitate efficient installations, minimizing downtime.

**Warranty Preservation:** PAL-Parts often maintain equipment warranties.

**Consistent Performance:** PAL-Parts ensure ongoing optimal performance, avoiding variables from non-PAL alternatives.

Opt for PAL-Parts to ensure longevity and ROI. Follow the manufacturer's maintenance schedule and consult your authorized distributor for optimal performance and service.



Sullivan-Palatek ensures your rotary screw compressor's longevity with advanced synthetic lubricants tailored to diverse compressed air system conditions. Our formulas address high ambient temperatures, high-pressure settings, and environments with acidic airborne elements. For applications requiring environmentally sensitive air contact, we use FDA-approved ingredients exceeding federal standards.

**Pal-EXTRA 44:** Custom-formulated polyolester (POE) 100% synthetic lubricant for low deposits in high temperatures and resistance to acidic intake air. 8000-hour service life.

### Optional

**Palasyn 45:** Polyalphaolefin PAO synthetic blend for enhanced performance beyond conventional oils. 8000-hour service life.\*

**Pallube 32p:** 100% synthetic lubricant with polyalkylene glycol (PAG) and pentaerythritol esters for improved cooling under high temperatures. 8000-hour service life.\*

**Food Grade 32 LL:** Custom-blended polyalphaolefin (PAO) with FDA-approved ingredients for incidental food contact. 4000-hour service life.\*

*\*Oil life may vary based on environmental conditions and compressor short cycling*



**Rely on Sullivan-Palatek's authorized independent distributors for complete system and service support, including air treatment. Our network provides customer service, technical support, and professional air audits, offering expert advice on compressed air solutions and skilled routine maintenance by factory-trained personnel.**



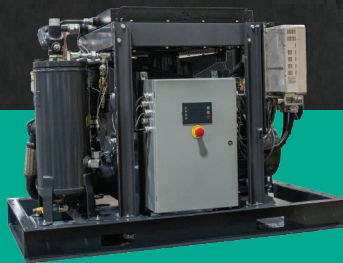
## Technical Data

Model	SP11-25	SP11-30	SP11-40
<b>Horsepower</b>	25	30	40
<b>*acfm @ 100 psig L</b>	106.2	145	175.4
<b>*acfm @ 125 psig</b>	104.3	127.1	158.1
<b>*acfm @ 150 psig H</b>	90.8	99.7	138.8
<b>*acfm @ 175 psig HH</b>	-	89.6	120.5
	<b>Length</b>	<b>Width</b>	<b>Height</b>
<b>Base Mounted Open - inches</b>	62.5	37	43.6
<b>Base Mounted w/Enclosure - inches</b>	62.5	37	45.2
<b>Weight - lbs</b>			
Model	SP11-25 VFD	SP11-30 VFD	SP11-40 VFD
<b>Horsepower</b>	25	30	40
<b>*acfm @ 100 psig L</b>	117.2	151.1	185.3
<b>*acfm @ 125 psig</b>	105.9	129.3	162.7
<b>*acfm @ 150 psig H</b>	90.1	111.5	147.2
<b>*acfm @ 175 psig HH</b>	80.6	102.4	125.6
<b>Base Mounted Open - inches</b>	62.5	37	43.6
<b>Base Mounted w/Enclosure - inches</b>	62.5	37	45.2
<b>Weight (Open) - lbs</b>	1289	1420	1484
<b>Weight (Enclosed) - lbs</b>	1511	1642	1706

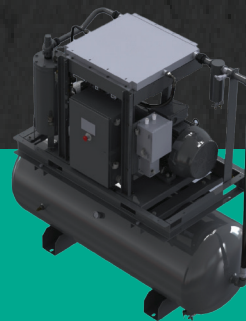


CAGI Data Sheet

\*Capacity in accordance with CAGI/ISO 1217 (Annex C / Annex E)



\*Shown with optional VFD



\*Shown with optional tank mount



\*Shown with optional enclosure



### Sullivan-Palatek, Inc.

1201 West US Highway 20  
Michigan City, IN 46360

219.874.2497

sullivan-palatek.com

info@palatek.com