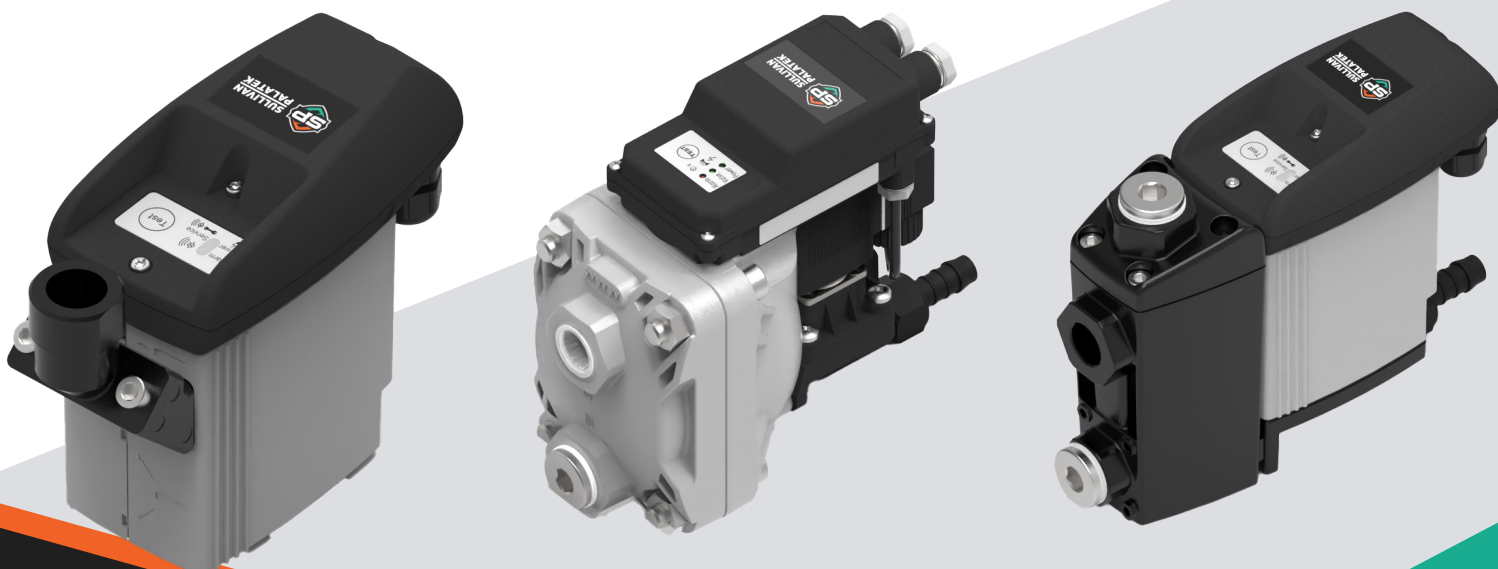


ZERO LOSS DRAINAGE

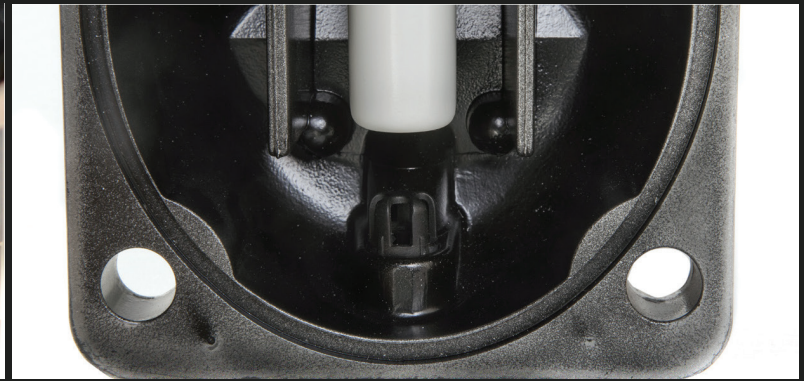
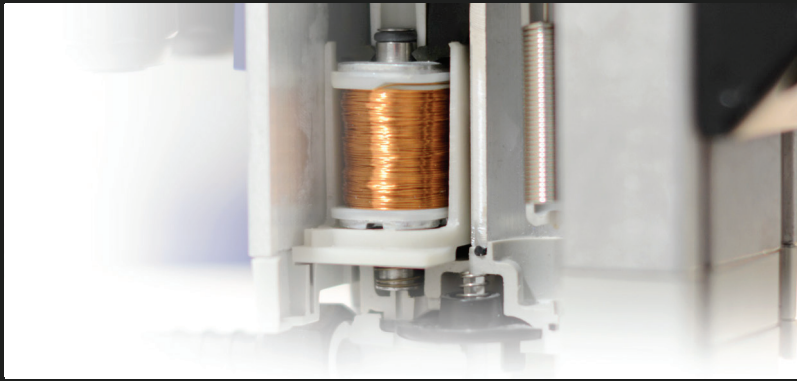
DEPENDABLE BY DESIGN



SPZL DRAIN



**SULLIVAN
PALATEK**

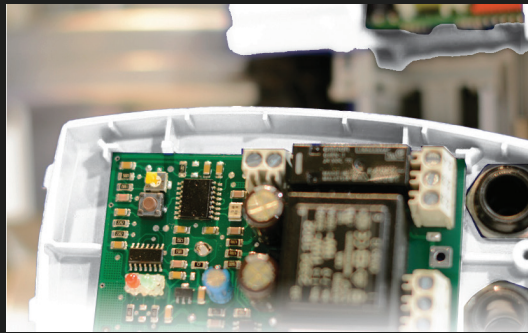


Energy Savings

Maximum energy savings is achieved from the patented operation that guarantees true zero air loss.

Reliability

An integrated sieve eliminates concerns about dirt, Y-strainers, and extra maintenance giving you the highest level of reliability.



Intelligence

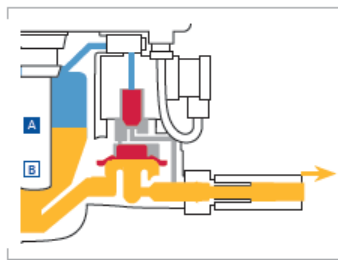
The electronic control board and sensor ensure intelligent operation at all times with the ability to automatically clear clogs and debris.

Maintenance

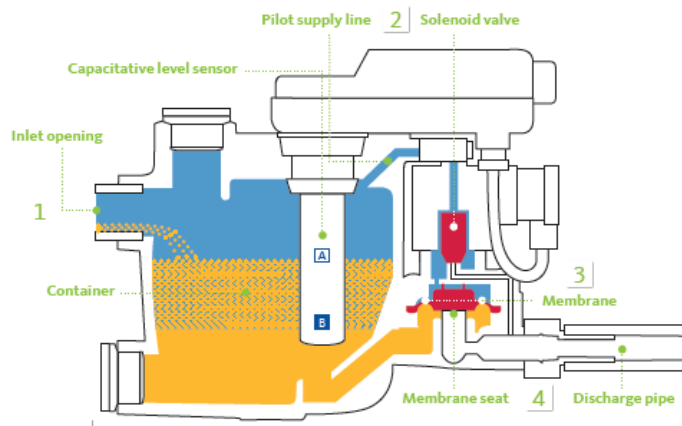
Maintenance time and costs are kept to an absolute minimum with a quick and easy procedure consisting of just one part.

Trustworthy

You can rely on the global leader in condensate technology trusted by more equipment manufacturers than any other brand.



Condensate outlet



Condensate inlet

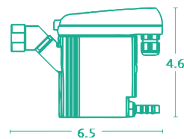
1. The condensate trickles through the inlet opening and collects in the container.
2. Initially, the valve is closed as, via the pilot supply line and the solenoid valve, pressure differential above the membrane is affected. The larger surface area above the membrane results in a high closing force. The membrane seat remains closed and leak-proof.
3. When the container is filled with condensate, so that the capacitive level sensor gets a signal at the maximum point, the solenoid valve switches over and the area above the membrane is vented.
4. As a result of the decreasing pressure above the membrane, the membrane lifts off the membrane seat and the overpressure in the housing forces the condensate into the discharge pipe.

TECHNICAL DETAILS

SPZL Standard Condensate Drains

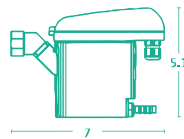
for standard pressure

- Automatic zero loss drain
- Standard Viton® diaphragm
- UL/CSA approved
- Min. / max. operating temperature: 33 °F / 140 °F
- Standard voltage:
- SPZL Drain 31-33: 95-240 VAC 50/60 Hz /100-125 VDC
- SPZL Drain 13-16: 115 VAC
- > Optional voltages:
- SPZL Drain 31-33: 18 - 72 VDC, 24 - 48 VAC
- SPZL Drain 13-16: 24 VAC/DC, 230 VAC 50/60 Hz



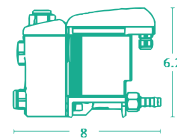
Depth: 2.6

Aluminum Housing
*without dry contact



Depth: 2.9

Aluminum Housing

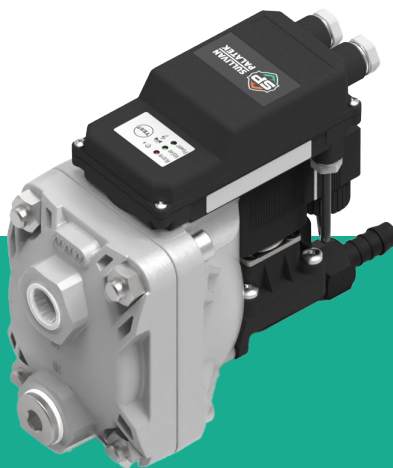


Depth: 2.9

Aluminum Housing

SPZL Drain	31	32	33	13	14
Connection Size (NPT)	1 x ½"	1 x ½"	3 x ½"	2 x ½"	3 x ¾"
Min. / Max Pressure (psig)	12 / 232	12 / 232	12 / 232	12 / 232	12 / 232
Compressor Flow Rate (scfm)	100	225	500	1300	5400
Dryer Flow Rate (scfm)	200	450	1000	2600	10800
Filter Flow Rate (scfm)	1000	2250	5000	13000	54000
Max Temperature	140 °F	140 °F	140 °F	140 °F	140 °F
Built in Sieve			✓		
Y Strainer				✓	✓
List Price	\$241.00	\$327.00	\$577.00	\$856.00	\$1,159.00

****Do NOT use "31" on wet tank** "33" is best for wet tank.
Use poly tube if at all possible. Do not use hard pipe to drain.**



DEPENDABLE BY DESIGN



Sullivan Palatek

1201 West US Highway 20
Michigan City IN, 46360

(219) 874 - 2497

www.sullivan-palatek.com



**SULLIVAN
PALATEK**

05018731-0025 R00